

Restrictive Housing Data Report

Fourth Quarter 2025



This brief report describes 1) characteristics of the population assigned to restrictive housing on December 31, 2025, and 2) trends in the average daily population and length of stay in restrictive housing from January 1, 2016, to December 31, 2025.

Data Source(s). OMNI as of January 22, 2026

Population Snapshot

Individuals assigned to restrictive housing on December 31, 2025, are described by race and ethnicity, Security Threat Group (STG) status, and STG affiliation.

Race and ethnicity. Based on self-reported race and ethnicity data, there were no significant differences amongst racial and ethnic groups placed in administrative segregation or assigned maximum custody compared to their portion of the general population (Table 1).

Table 1. Composition of incarcerated populations by race & ethnicity on December 31, 2025.

Race and ethnicity	ADSEG		MAX		General	
	<i>n</i>	%	<i>n</i>	%	<i>n</i>	%
White	228	3.0%	173	2.3%	7,180	94.7%
Black	92	3.6%	60	2.3%	2,409	94.1%
Hispanic	76	3.3%	69	3.0%	2,180	93.8%
American Indian or Alaska Native	45	4.3%	35	3.3%	972	92.4%
Asian	10	2.0%	15	2.9%	487	95.1%
Pacific Islander	10	4.0%	10	4.0%	228	91.9%
Other	4	2.6%	2	1.3%	147	96.1%
Total	465	3.2%	364	2.5%	13,603	94.3%

Security Threat Group (STG) status. STG members, affiliates, and suspects were nearly twice as likely to be placed in administrative segregation (4.6% vs 2.7%) and more than three times as likely to be assigned maximum custody (5.2% vs 1.6%) than people without an STG association.

Table 2. Composition of incarcerated populations by STG status on December 31, 2025.

STG member, suspect, or affiliate	ADSEG		MAX		General	
	<i>n</i>	%	<i>n</i>	%	<i>n</i>	%
No	289	2.7%	165	1.6%	10,141	95.7%
Yes*	176	4.6%	199	5.2%	3,462	90.2%
Total	465	3.2%	364	2.5%	13,603	94.3%

*>95% probability of direction and <1% of the estimate's posterior distribution in the region of practical equivalence.

Security Threat Group affiliation. Table 3 describes the probabilities of major STG affiliations placed in administrative segregation, assigned to maximum custody, and the general population. Our analysis found that the White Supremacist group had a high probability of assignment to maximum custody (10%, i.e., 41 of 408).

Table 3. Composition of incarcerated populations by STG affiliation on December 31, 2025.

STG affiliation	ADSEG		MAX		General	
	N	%	n	%	n	%
Sureño	38	4.5%	53	6.2%	757	89.3%
Crip	35	4.5%	29	3.8%	709	91.7%
White Supremacist	19	4.7%	41*	10.0%	348	85.3%
Blood	23	5.9%	19	4.8%	350	89.3%
Norteño	12	2.6%	20	4.4%	422	93.0%
Gangster Disciple	17	4.6%	13	3.6%	336	91.8%
Other	32	5.4%	24	4.0%	540	90.6%
Total	176	4.6%	199	5.2%	3,462	90.2%

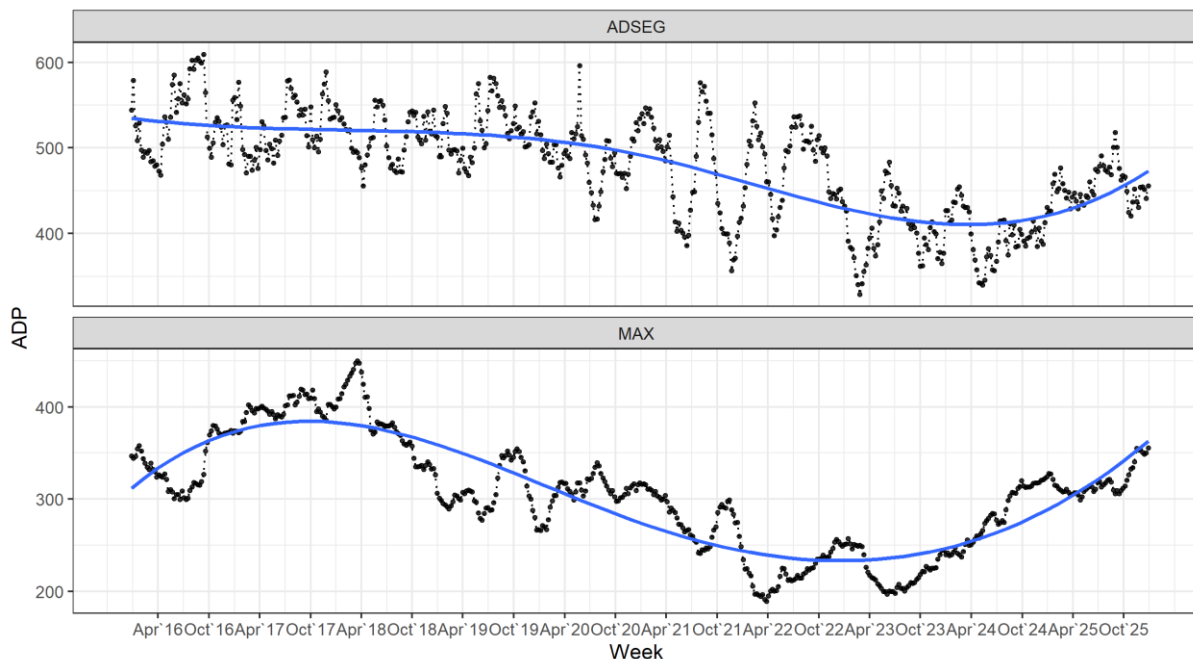
*A Bayes factor > 3 favors the hypothesis that group probability is greater than expected, given the overall probability for STGs.

Population Trends

Population trends are described for the average daily population over weekly periods (“weekly ADP”) and the average time spent in restrictive housing for the population exiting each month.

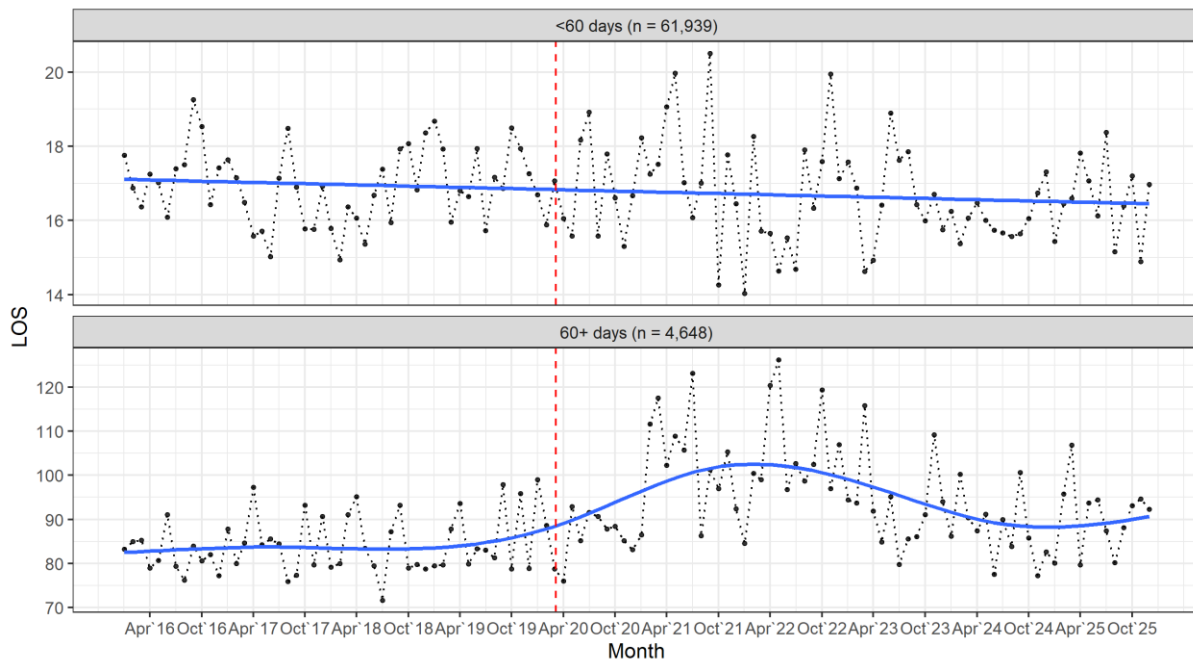
Weekly ADP. Figure 1 illustrates the overall decline in weekly ADP since January 2016. However, the administrative segregation and maximum custody ADP’s have shown upward trends the past year. In the Fourth quarter of 2025, administrative segregation ADP increased to 445 compared to 399 in Q4 2024 (+12%), while weekly ADP in maximum custody increased to 339 compared to 317 in Q4 2024 (+7%).

Figure 1. Trends in weekly ADP between 1/1/2016 and 12/31/2025.



Average time in restrictive housing. Figure 2 shows exits from administrative segregation after less than 60 days ($n = 61,939$) and after 60 days or more ($n = 4,648$). During the Fourth quarter of 2025, the average length of stay for people exiting after 60 days or more in administrative segregation increased to 93 days compared to pre-COVID levels of 83 days in Q4 2019 (+12%).

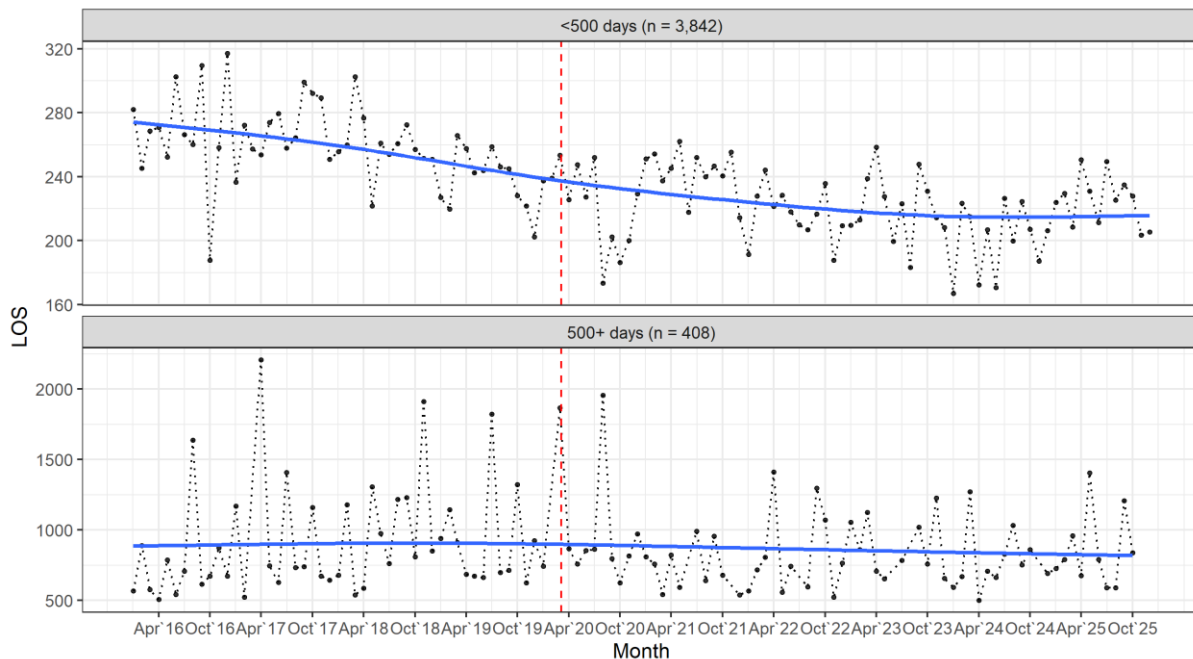
Figure 2. Administrative segregation average length of stay between 1/1/2016 and 12/31/2025.



NOTE: The red line indicates the opening of the COVID-19 Emergency Operations Center on March 2, 2020.

Figure 3 shows maximum custody exits within 500 days of assignment ($n = 3,842$) and after 500 days or more ($n = 408$). In Q4 2025, the average length of stay among those exiting within 500 days increased to 213 days compared to 201 days in Q4 2024 (+6%).

Figure 3. Maximum custody average length of stay between 1/1/2016 and 12/31/2025.



NOTE: The red line indicates the opening of the COVID-19 Emergency Operations Center on March 2, 2020.

Table 4 shows the average days and number of individuals exiting administrative segregation in the Fourth quarter of 2025 by race and ethnicity. Given the data, there were no significant differences in length of stay amongst racial and ethnic groups exiting administrative segregation when compared to the White population.

Table 4. Administrative segregation exits in the Fourth quarter of 2025 by race and ethnicity.

Race and ethnicity	< 60 days				60+ days			
	N	%	Days (Avg)	Days (Mdn)	n	%	Days (Avg)	Days (Mdn)
White	709	46.0%	17.1	13.0	44	48.9%	104.8	76.5
Black	318	20.6%	15.4	12.0	16	17.8%	83.1	76.5
Hispanic	270	17.5%	15.9	11.0	17	18.9%	81.4	73.0
American Indian or Alaska Native	147	9.5%	14.8	11.0	10	11.1%	78.4	76.5
Pacific Islander	45	2.9%	22.0	23.0	1	1.1%	103.0	103.0
Asian	40	2.6%	15.5	13.0	1	1.1%	101.0	101.0
Other	11	0.7%	17.8	18.0	1	1.1%	68.0	68.0
Total	1,540	100.0%	16.4	13.0	90	100.0%	93.1	76.0

Table 5 shows the average days and number of individuals exiting maximum custody in the Fourth quarter of 2025 by race and ethnicity. Given the data, there were no significant differences in length of stay amongst racial and ethnic groups exiting maximum custody when compared to the White population.

Table 5. Maximum custody exits in the Fourth quarter of 2025 by race and ethnicity.

Race and ethnicity	< 500 days				500+ days			
	N	%	Days (Avg)	Days (Mdn)	n	%	Days (Avg)	Days (Mdn)
White	39	39.8%	209	198	1	50.0%	1,059	1,059
Hispanic	25	25.5%	203	197				
Black	20	20.4%	223	200	1	50.0%	617	617
American Indian or Alaska Native	5	5.1%	219	219				
Asian	5	5.1%	249	225				
Pacific Islander	3	3.1%	224	280				
Other	1	1.0%	160	160				
Total	98	100.0%	213	202	2	100.0%	838	838

Methodology

This report uses data compiled from the Washington State Department of Corrections Offender Management Network Information (OMNI) system to analyze the characteristics and trends of the restrictive housing population.

In Tables 1 and 3, Bayesian inference of proportions was used to evaluate compositional differences in the administrative segregation and maximum custody populations relative to the general population. Significance was tested using a Bayes factor threshold of greater than 3.

Bayesian regression analysis was used to evaluate any associations between STG status and placement in administrative segregation or assignment to maximum custody, as shown in Table 2. Significance testing was based on a probability of direction greater than 95% and a percent in the range of practical equivalence of less than 1%. Using similar methods, Tables 4 and 5 evaluated any associations between race and ethnicity and length of stay in administrative segregation or maximum custody. Significance testing for Tables 4 and 5 needed to meet the same probability of direction requirement as Table 2 (>95%), but the threshold requirement for percent in the range of practical equivalence was less than 2.5%. The regression analysis used a logarithmic transformation of the length of stay variable.

Figures 1, 2, and 3 include a blue line that illustrates trends in the average daily population and the average length of stay for the administrative segregation and maximum custody populations. A generalized additive model was used to estimate the best-fit line representing changes in the average daily population and the average length of stay measures with respect to time.

Appendix A

Race and Ethnicity

Table A1. Composition of incarcerated populations by race & ethnicity on December 31, 2025.

Race and ethnicity	ADSEG			MAX			General		
	<i>n</i>	Row %	Col %	<i>n</i>	Row %	Col %	<i>n</i>	Row %	Col %
White	228	3.0%	49.0%	173	2.3%	47.5%	7,180	94.7%	52.8%
Black	92	3.6%	19.8%	60	2.3%	16.5%	2,409	94.1%	17.7%
Hispanic	76	3.3%	16.3%	69	3.0%	19.0%	2,180	93.8%	16.0%
American Indian or Alaska Native	45	4.3%	9.7%	35	3.3%	9.6%	972	92.4%	7.1%
Asian	10	2.0%	2.2%	15	2.9%	4.1%	487	95.1%	3.6%
Pacific Islander	10	4.0%	2.2%	10	4.0%	2.7%	228	91.9%	1.7%
Other	4	2.6%	0.9%	2	1.3%	0.5%	147	96.1%	1.1%
Total	465	3.2%	100.0%	364	2.5%	100.0%	13,603	94.3%	100.0%

Appendix B

Security Threat Group

Table B1. Composition of incarcerated populations by STG status on December 31, 2025.

STG member, suspect, or affiliate	ADSEG			MAX			General		
	<i>n</i>	Row %	Col %	<i>n</i>	Row %	Col %	<i>n</i>	Row %	Col %
No	289	2.7%	62.2%	165	1.6%	45.3%	10,141	95.7%	74.5%
Yes*	176	4.6%	37.8%	199	5.2%	54.7%	3,462	90.2%	25.5%
Total	465	3.2%	100.0%	364	2.5%	100.0%	13,603	94.3%	100.0%

*>95% probability of direction and <1% of the estimate's posterior distribution in the region of practical equivalence.

Table B2. Composition of incarcerated populations by STG affiliation on December 31, 2025.

STG affiliation	ADSEG			MAX			General		
	<i>n</i>	Row %	Col %	<i>n</i>	Row %	Col %	<i>n</i>	Row %	Col %
Sureño	38	4.5%	21.6%	53	6.2%	26.6%	757	89.3%	21.9%
Crip	35	4.5%	19.9%	29	3.8%	14.6%	709	91.7%	20.5%
White Supremacist	19	4.7%	10.8%	41*	10.0%	20.6%	348	85.3%	10.1%
Blood	23	5.9%	13.1%	19	4.8%	9.5%	350	89.3%	10.1%
Norteño	12	2.6%	6.8%	20	4.4%	10.1%	422	93.0%	12.2%
Gangster Disciple	17	4.6%	9.7%	13	3.6%	6.5%	336	91.8%	9.7%
Other	32	5.4%	18.2%	24	4.0%	12.1%	540	90.6%	15.6%
Total	176	4.6%	100.0%	199	5.2%	100.0%	3,462	90.2%	100.0%

*A Bayes factor > 3 favors the hypothesis that group probability is greater than expected, given the overall probability for STGs.

Appendix C
Length of Stay

Table C1. Administrative segregation exits in the Fourth quarter of 2025 by race and ethnicity.

Race and ethnicity	< 60 days				60+ days				Combined			
	<i>n</i>	%	Days (Avg)	Days (Mdn)	<i>n</i>	%	Days (Avg)	Days (Mdn)	<i>n</i>	%	Days (Avg)	Days (Mdn)
White	709	46.0%	17.1	13.0	44	48.9%	104.8	76.5	753	46.2%	22.2	14.0
Black	318	20.6%	15.4	12.0	16	17.8%	83.1	76.5	334	20.5%	18.7	13.0
Hispanic	270	17.5%	15.9	11.0	17	18.9%	81.4	73.0	287	17.6%	19.8	11.0
American Indian or Alaska Native	147	9.5%	14.8	11.0	10	11.1%	78.4	76.5	157	9.6%	18.8	12.0
Pacific Islander	45	2.9%	22.0	23.0	1	1.1%	103.0	103.0	46	2.8%	23.8	23.5
Asian	40	2.6%	15.5	13.0	1	1.1%	101.0	101.0	41	2.5%	17.6	13.0
Other	11	0.7%	17.8	18.0	1	1.1%	68.0	68.0	12	0.7%	22.0	20.0
Total	1,540	100.0%	16.4	13.0	90	100.0%	93.1	76.0	1,630	100.0%	20.7	13.5

Table C2. Maximum custody exits in the Fourth quarter of 2025 by race and ethnicity.

Race and ethnicity	< 500 days				500+ days				Combined			
	<i>n</i>	%	Days (Avg)	Days (Mdn)	<i>n</i>	%	Days (Avg)	Days (Mdn)	<i>n</i>	%	Days (Avg)	Days (Mdn)
White	39	39.8%	209	198	1	50.0%	1,059	1,059	40	40.0%	230	201
Hispanic	25	25.5%	203	197					25	25.0%	203	197
Black	20	20.4%	223	200	1	50.0%	617	617	21	21.0%	242	210
American Indian or Alaska Native	5	5.1%	219	219					5	5.0%	219	219
Asian	5	5.1%	249	225					5	5.0%	249	225
Pacific Islander	3	3.1%	224	280					3	3.0%	224	280
Other	1	1.0%	160	160					1	1.0%	160	160
Total	98	100.0%	213	202	2	100.0%	838	838	100	100.0%	225	203