

Improving Public Safety by Positively Changing Lives

Reentry Systems

Fact Sheet | October 2024



FY24 HIGHLIGHTS

2,242

Individuals referred for Navigation Services

1,974

Individuals who had 90% of identified needs addressed through Navigation Services

1,265

Individuals who received assistance with an Individual Reentry Plan

1,107

Individuals who received assistance with a Release Needs Survey

1,246

Reentry Team Meetings conducted



Program Overview

The Reentry Systems Unit within the Reentry Division directly supports the department's mission and strategic plan by directly supporting the Governor's Executive Order 24-03 Building Safe and Strong Communities Through Successful Reentry, Washington's commitment to Reentry 2030, and in accordance with RCW 72.09.270 concerning Individual Reentry Plans.

The Reentry Navigator team consists of 25 committed staff who provide services statewide. This includes two Cultural Specialist Navigators who work with releasing Veteran and Native American/Alaskan Native populations.

Reentry Navigation

The Reentry Navigators for the Reentry Division works closely with various navigators throughout the state including college/education navigators, workforce navigators, health services navigators (psychiatric social workers and medication-assisted treatment navigators), housing specialists, and community partners. In addition, the Reentry Navigators receive requests for assistance from classification counselors, various community stakeholders, and DOC leadership to support individuals in their reentry planning efforts.

Primary services include assisting individuals in identifying strengths by completing their individual reentry plan, essential needs planning to prepare for their transition to the community, and resource navigation. Additionally, services include helping transitioning individuals and corrections staff to navigate through numerous supportive services being offered and addressing potential barriers to transition.

The primary focus of Reentry Navigators is connecting individuals to essential needs and support services, which may include food, clothing, phones, healthcare, wellness, supportive housing with pathways to permanent housing, identification, education, vocational training, job search assistance, financial benefits, and support. In addition to these services, Navigators collaborate with community partners and stakeholders to create a more efficient handoff process to ensure a smooth transition to community-based providers. They also follow up with individuals in the community to assess their progress toward meeting their goals, identify barriers, and address those challenges.

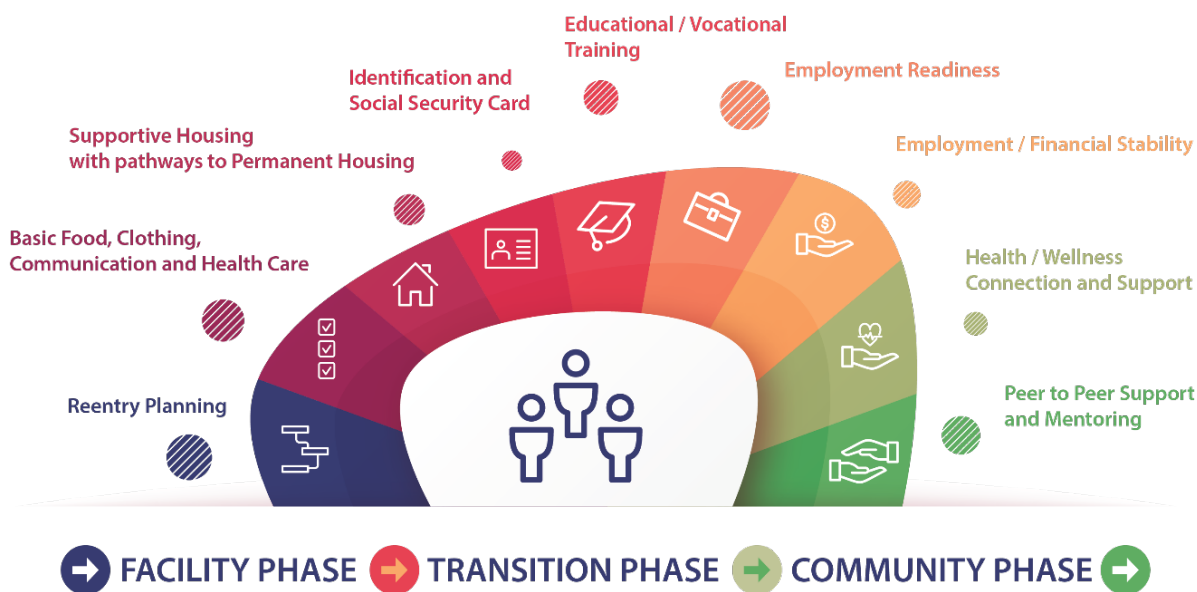
In 2024, Reentry Navigators served **53** Community Parenting Alternative participants, **730** Graduated Reentry Participants, **686** Reentry Center participants, and **471** "other" referrals. Cultural Specialist Navigators served **213** participants, and **791** veterans received assistance in securing a copy of their DD 214.

Integrated Reentry Model

The department utilizes an integrated reentry model that focuses on individual needs, collaborates across divisions, and leverages connections to state, local, and community-based resources to assist with transition and help individuals in the community.

This model includes three phases:

- **Facility Phase** begins at reception with continuous case planning, orientation, evidence-based programs and treatment, education, and employment readiness as identified in the Washington State risk assessment tool which assesses the individual's criminogenic risks and programmatic needs. In addition, the Individual Reentry Plan guides the individual through setting individualized SMART goals to prepare for their reentry based on the goals they identify.
- **Transition Phase** begins at the time the individual is approaching transfer to partial confinement or release to the community. The transition phase includes updating the Individual Reentry Plan, essential needs planning, health and wellness transition, short-term housing assistance, community navigator connection, continuity of care transition planning, identification, and connections to resources.
- **Community Phase** begins at the time the individual is stable in the community and includes pro-social supports, long-term housing, health and wellness, financial stability, long-term employment, and educational pathways.



2024 Initiatives

- Monthly Individual Reentry Plan (IRP) Workshops to support pre-release planning.
- iCoach Pilot at Washington Corrections Center in collaboration with Transition Resource Specialist
- Assist with organizing and supporting the CPTS Summer Institute 2025 in Spokane
- Continuing the Innovation in Reentry Initiative, Building Capacity Grant pilot utilizing verified providers for individual referrals and collaborating with the Washington State Institute for Public Policy for evaluation.



Contact information:

David Sather
Reentry Systems Administrator
Washington State
Department of Corrections
djsather@doc1.wa.gov
(425) 754 2855