


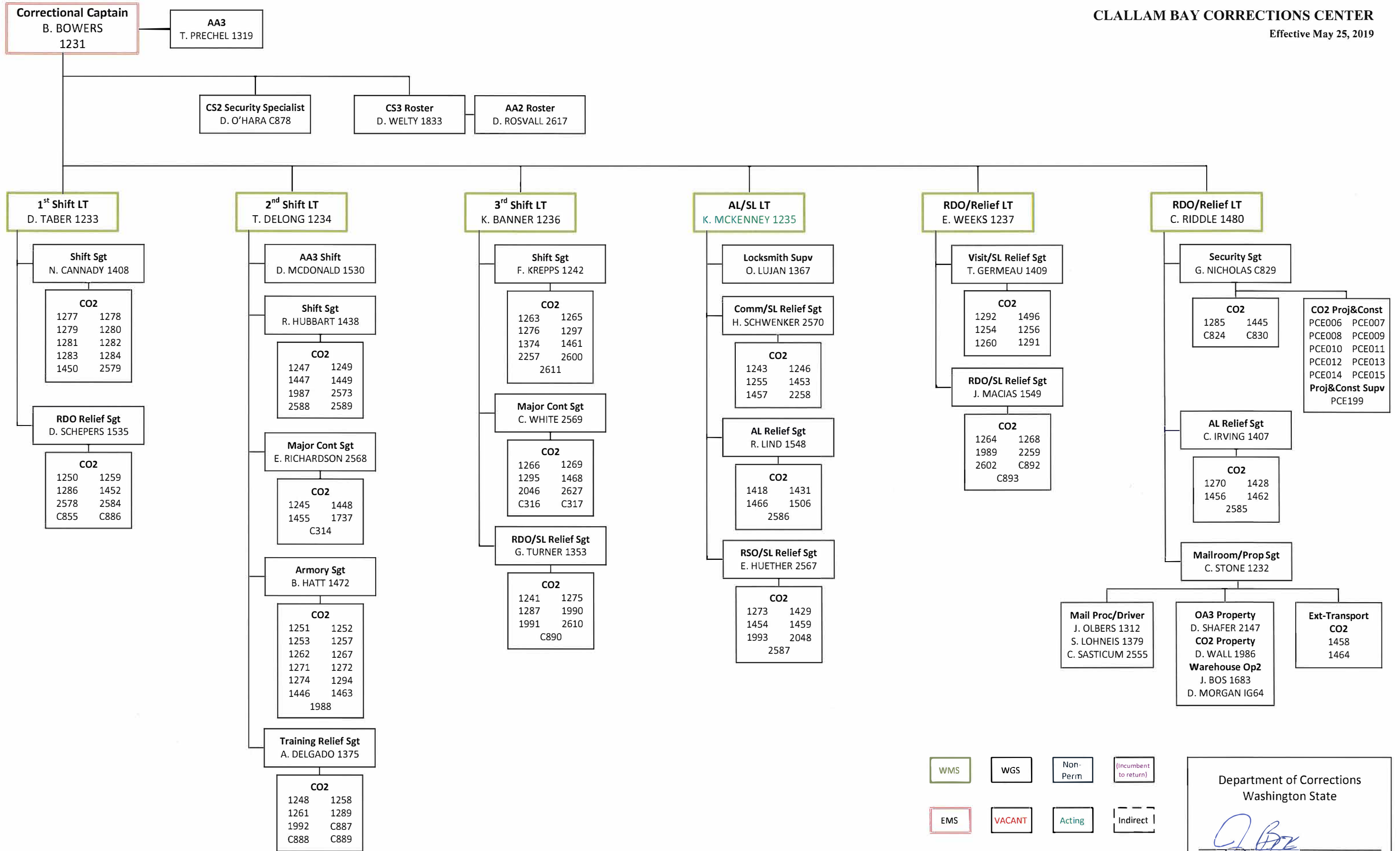
WMS	WGS	Non-Perm	(Incumbent to return)
EMS	VACANT	Acting	Indirect

Note: Appointing Authorities are denoted by an asterisk *

Department of Corrections
Washington State



Jen Boe, Superintendent, CBCC

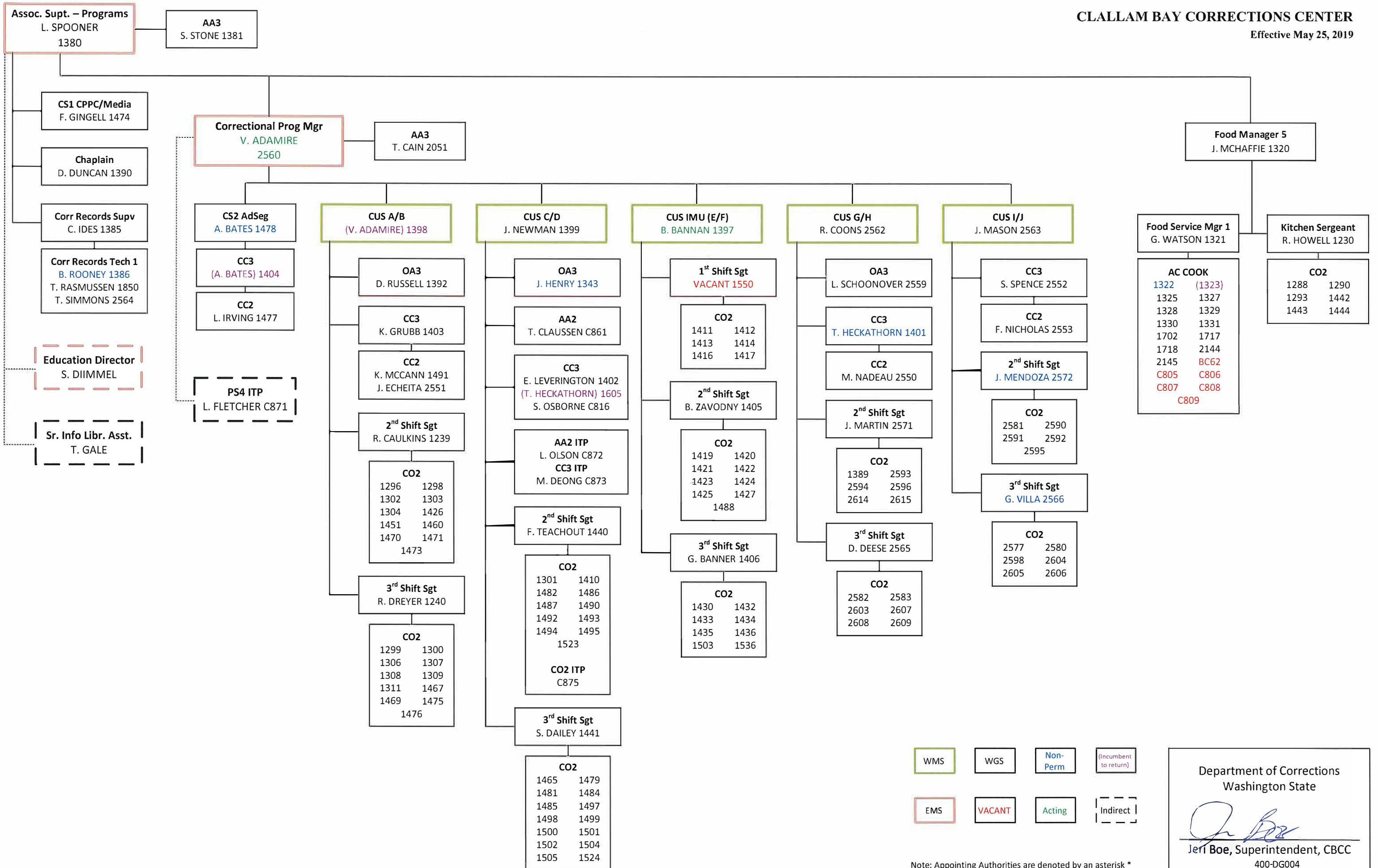


WMS	WGS	Non-Perm	(Incumbent to return)
EMS	VACANT	Acting	Indirect

Department of Corrections
Washington State

J. Boe
Jeri Boe, Superintendent, CBCC


Note: Appointing Authorities are denoted by an asterisk *



WMS	WGS	Non-Perm	(Incumbent to return)
EMS	VACANT	Acting	Indirect

Note: Appointing Authorities are denoted by an asterisk *

Department of Corrections
Washington State



Jeri Boe, Superintendent, CBCC
400-DG004