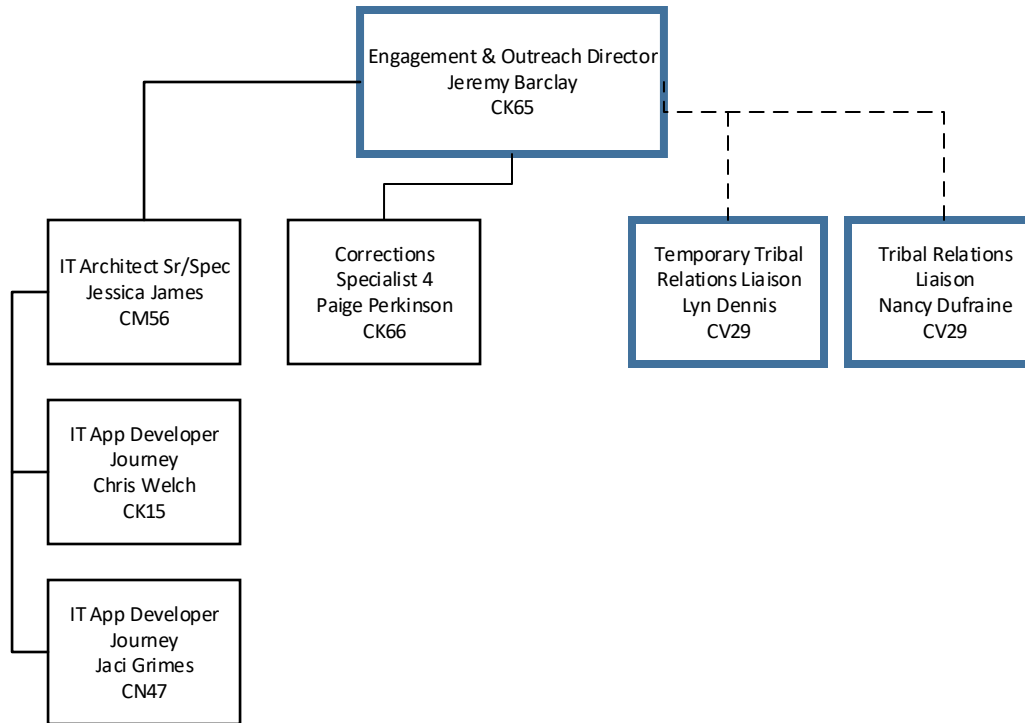


Engagement and Outreach Division Organizational Chart



EMS

WMS

WGS

EMS INTERIM

WMS ACTING

UNFUNDED

NON-PERM

VACANT

VACANT
TEMPORARILY –
INCUMBENT TO
RETURN

DOUBLE FILL

UNDER FILL

DEPARTMENT OF CORRECTIONS
WASHINGTON STATE
August 1,, 2019
100-DG007