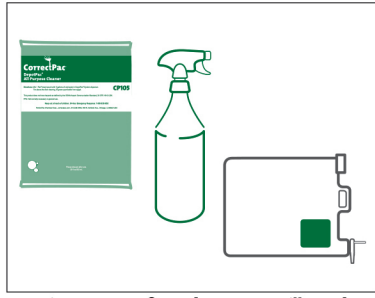
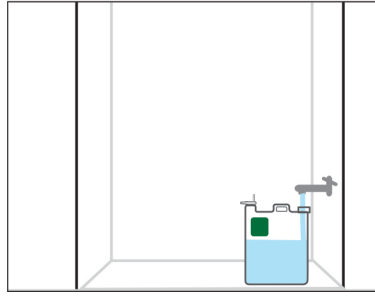


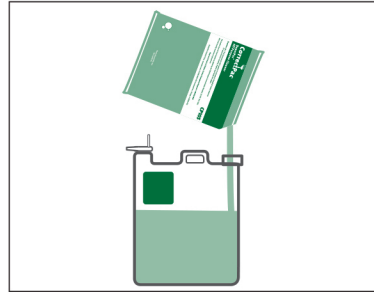
DepotPac[®] Product Mixing Instructions



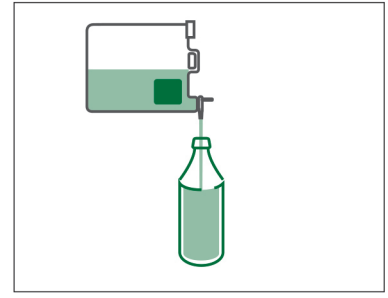
To mix DepotPac[®] products you will need one Pac[®] brand pouch, color matched bottle and a properly labeled Depot container.



To start, fill the properly labeled Depot container with cold water.



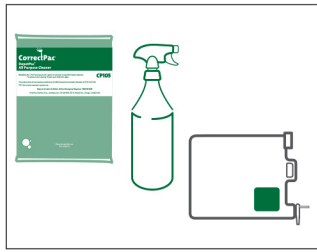
Then, pour in contents of 1 Pac[®] brand pouch. Close the Depot container and return it to its proper shelf in the utility closet.



To dispense, fill the color matched bottle with pre-mixed solution.

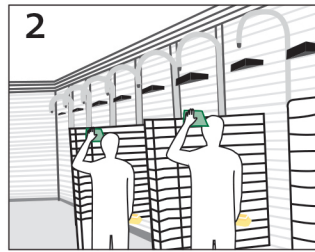
DepotPac[®] Product Use Instructions

CP105 All Purpose Cleaner For cleaning shower walls, bathtubs, sinks, baseboards, vinyl furniture, wall spotting, and other soiled surfaces and equipment.



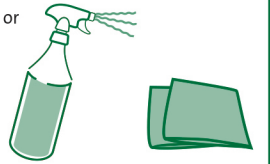
Daily Shower Cleaning

1. Spray green All Purpose cleaner on shower walls until wet with solution. Let stand for several minutes.
2. Next, scrub and clean fixtures, walls, in corners and around the drain. Rinse with clean water.

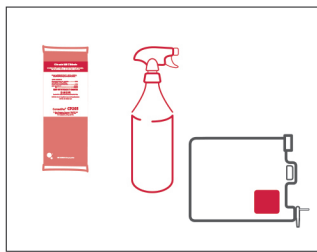


Spot Surface Cleaning

1. Lightly spray green All Purpose Cleaner on surface.
2. Next, use non-abrasive pad or towel to scrub surface.

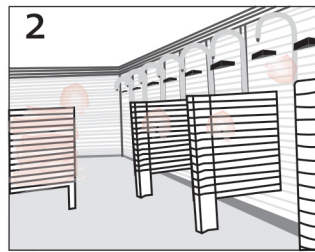
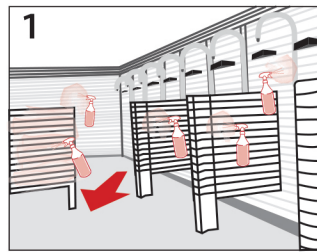


CP205 Germicidal Cleaner For cleaning and disinfecting tables, walls, mirrors, stainless steel, bathroom fixtures and other hard surfaces.



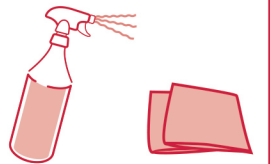
Disinfecting Showers

1. After cleaning spray, red Germicidal Detergent on shower walls. Focus on problem areas plagued by mold and mildew.
2. Allow to air dry.

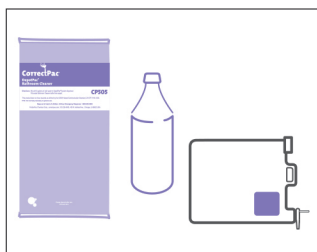


Daily Surface Disinfecting

1. Spray all high touch surfaces with red Germicidal Detergent.
2. Scrub or wipe surfaces to remove soils.

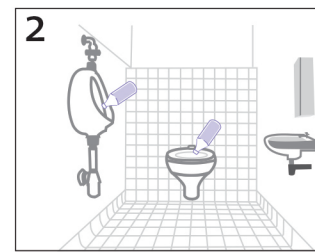


CP505 Bathroom Cleaner For daily bowl and urinal maintenance. No harsh caustics or dangerous acids. Removes stains, mineral deposits and rust.

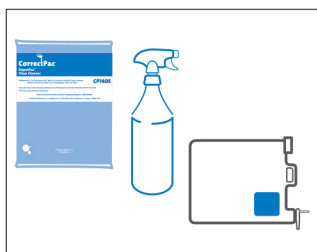


Daily Toilet and Urinal Cleaning

1. Flush toilet or urinal.
2. Apply purple Bathroom Cleaner to inside of fixture. Let stand.
3. Scrub inside of toilet or urinal. Flush.

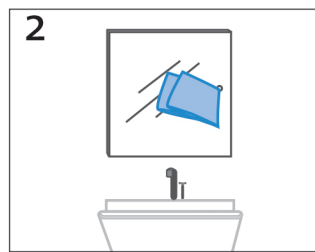
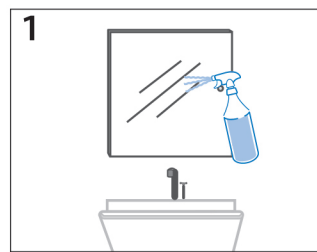


CP1405 Glass Cleaner For cleaning glass, mirrors, stainless steel, copper, brass, Formica, vinyl, Plexiglas and Lexan. Fast drying, streak-free.

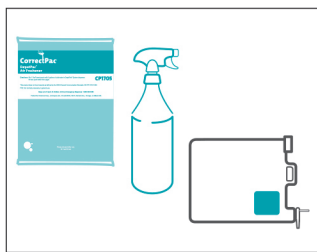


Glass Cleaning

1. Spray lightly on surface. Using too much may leave streaks or film.
2. Dry with clean towel.

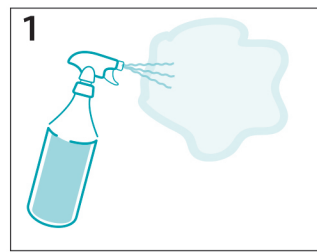


CP1705 Air Freshener Neutralizes malodors.

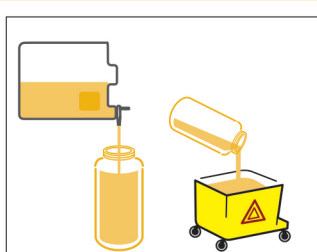


Air Freshening

1. Spray light mist to freshen air.



CP1805 pH Neutral Floor Cleaner For daily cleaning of all hard surface flooring.



Daily Floor Cleaning

1. Sweep or dust mop to remove surface dirt and pick up litter.
2. Position wet floor signs in the traffic area. Damp mop the floor. Start from the back of the room and work outward.



Empty and rinse containers before refilling. Always clean your towels, mops, pads and other tools at the end of every job.

Emergency Response Phone 1-800-535-5053

All Purpose Cleaner, Bathroom Cleaner, Glass Cleaner, pH Neutral Floor Cleaner: PPE not normally necessary in general use. If misted in concentrated form, which is improper use, may cause irritation of the throat and respiratory tract or skin and eye irritation.
Germicidal Detergent: Refer to Precautionary Statements on SDS for PPE information.

This document is part of the PortionPac[®] Program and is proprietary material of PortionPac Chemical Corp. ©2018 PortionPac Chemical Corp. All rights reserved. 022018 L000087
PortionPac[®] and the "Pac[®] Brand Family" names and images are the intellectual property of PortionPac[®] Chemical Corp., 400 N. Ashland Avenue, Chicago IL 60622 USA 312-226-0400