

ALL PURPOSE CLEANER

For removing soil and grease off floors, walls, table tops, fixed equipment, counters and all washable hard surfaces.

BUCKET PREPARATION



1. Fill bucket to proper level with cold water.
2. Pour in contents of 1 Pac® brand pouch.

MOPPING



1. Apply solution freely with mop.
2. No rinse required.

SCRUBBING



1. Apply to floor with mop or scoop.
2. Agitate with deck brush.
3. Mop or squeegee down drain.
4. Rinse floor.

BOTTLE PREPARATION



1. Fill Green quart bottle with cold water.
2. Pour in contents of 1 Pac® brand pouch.

SPRAY CLEANING



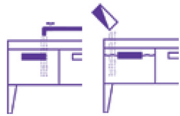
1. Spray surface.
2. Wipe dry with clean cloth.

NOTES
1. For heavily-soiled floors allow solution to stand for 5 minutes.

POT & PAN DETERGENT

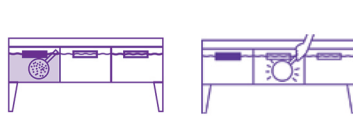
For manual cleaning and scrubbing of pots, pans, kettles, sheet pans and utensils.

SINK PREPARATION



1. Fill sink to the Fill Line with water.
2. Pour in contents of 1 Pac® brand pouch.

WASHING



1. Scrape away all food products.
2. Scrub with stiff brush or abrasive pad.
3. Immerse in clear water to rinse.
4. Change rinse water frequently.

BOTTLE PREPARATION



1. Fill Purple quart bottle to the line with water.
2. Pour in contents of 1 Pac® brand pouch.
3. For direct use and to fill small sinks.

NOTES
1. Soak for 5 minutes to loosen heavy grease

SANITIZER

For sanitizing pots, pans, utensils, fixed equipment, food contact surfaces and wiping cloths.

SINK PREPARATION



1. Fill sink to the Fill Line with water.
2. Pour in contents of 1 Pac® brand pouch.
3. Submerge clean and rinsed items for 1 minute.
4. Remove items to air dry.

STOCK SOLUTION PREPARATION



1. Fill Grey Stock Solution bottle to the ridge with water.
2. Pour in contents of 1 Pac® brand pouch CP1617.

SPRAY CLEANING



1. Fill Grey spray bottle to the ridge with water.
2. Pump in 1 stroke from Grey Stock Solution.
3. Thoroughly spray pre-washed surface.
4. Allow to air dry.

BUCKET PREPARATION



1. Fill Sanitizer bucket to the line with water.
2. Pump in 1 stroke from Grey Stock Solution.
3. Soak clean wiping cloths between use.

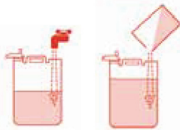
NOTES
1. Do not towel dry.
2. Test for proper ppm using quaternary test strips and log results.
3. SFS Pac® Sanitizer is pre-measured to yield 200 ppm*.

*SFS Pac® Sanitizer complies with 40 C.F.R. 180.940 at a concentration of 150-400 ppm as referenced in the current Model Food Code.

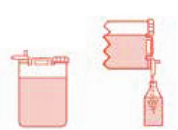
GERMICIDAL DETERGENT

For cleaning and disinfecting tables, sneeze guards, glass, stainless steel, bathroom fixtures and other general cleaning.

BOTTLE PREPARATION

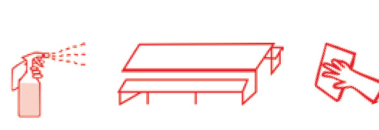


1. Fill the properly labeled Germicidal Detergent Depot container with cold water.
2. Pour in contents of 1 Pac® brand pouch.



3. Close the Depot container and return it to its proper shelf in the utility closet.
4. To dispense, fill red spray bottle with solution.

SPRAY CLEANING



1. Spray surface.
2. Wipe dry with clean cloth.

NOTES

DEGREASER

For everyday grease spills on floors and heavy-duty degreasing of fryers, hoods, ovens, racks and other difficult to clean surfaces.

BUCKET PREPARATION



1. Fill bucket to proper level with cold water.
2. Pour in contents of 1 Pac® brand pouch.

FLOOR DEGREASING



1. Apply liberally to floor.
2. Let stand 4-5 minutes.
3. Scrub with deck brush.
4. Mop or squeegee down drain.
5. Apply clear water rinse.
6. Pick up solution or squeegee down drain.
7. Repeat if necessary.

QUART BOTTLE PREPARATION



1. Fill Orange quart bottle to the line with cold water.
2. Pour in contents of 1 Pac® brand pouch.



3. Spray surface.
4. Let sit 2-3 minutes.
5. Clean and rinse.

OVEN DEGREASING



1. Fill Orange pint bottle to the line with cold water.
2. Pour in contents of 1 Pac® brand pouch.
3. Spray warm oven with solution.
4. Let sit for 10 minutes or longer.
5. Re-spray and rub gently with abrasive pad.
6. Wipe surface with wet cloth.

NOTES
1. Always shut off gas or electricity before cleaning.
2. PPE: Safety Glasses if splashes or mists will get into eyes. Gloves if hands will be continuously in solution.

BIO-CLEANER

For removal of organic soils.

DRAIN APPLICATION



1. Fill container with two quarts of cold water.
2. Pour in contents of 1 Pac® brand pouch.
3. Pour contents down drain.

PULPER AND DISPOSAL APPLICATION



1. Fill container with two quarts of cold water.
2. Pour in contents of 1 Pac® brand pouch.
3. Pour contents into machine.
4. Run machine through cycle.

NOTES

Empty and rinse containers before refilling. Always clean your towels, mops, pads and other tools at the end of every job.

PPE not normally necessary in general use. If misted in concentrated form, which is improper use, may cause irritation of the throat and respiratory tract or skin and eye irritation.

Emergency Response Phone 1-800-535-5053