



Work Release Expansion Project

Snohomish County
September 2021



Agenda

Meeting Objectives:

- ✓ Introductions and Review Contacts
- ✓ Review Work Release Program Overview
- ✓ Review Expansion Project Process/Timeline
- ✓ Review Site Specific Progress
- ✓ Discuss Next Steps
- ✓ Questions and Closing

Time	Topic	Lead
4:00 – 4:10	Introductions & Review Contacts	Mike Schindler, <i>Facilitator</i>
4:10 – 4:20	Work Release Program Overview	Mark Kucza, <i>DOC Reentry Division Senior Administrator, Project Lead</i>
4:20 – 4:30	Expansion Project Process/Timeline	Tony Lindgren, <i>KMB architects Consultant</i> Brian Little, <i>KMB architects Consultant</i>
4:30 – 4:45	Site Specific Progress	Tony Lindgren Brian Little Gar Rodside, <i>DOC Leased Facilities Senior Planner</i>
4:45 – 4:55	Next Steps	Tony Lindgren Mark Kucza
4:55 – 5:30	Questions & Closing	Mike Schindler

Mike Schindler, *Facilitator*

Introductions & Review Contacts

LAC Member Contact Information

Last Name	First Name	Company/Agency/Position	Email	Phone
Bloss	Jim	Community Advocate	jbloss132@gmail.com	360-794-3786
Brown	Carlos	The Hand Up Project - Robert Smiles Founder	carlosbrown@4sofhope.com	206-460-9108
Beazizo	Heidi	County Council	Heidi.Beazizo@co.snohomish.wa.us	425-309-6706
Frodema	Jon	Workforce Snohomish	jon.frodema@workforcesnohomish.org	425-921-3460
Gorle	Nicole	Snohomish County Council Legislative Analyst	nicole.gorle@snoco.org	425-388-3559
Goodman	Eric	Community Transit Snohomish County	eric.goodman@commtrans.org	425-870-4662 425-348-2307
Held	Michael	Snohomish County Prosecuting Attorney	mheld@co.snohomish.wa.us	425-890-6253
Hirashima	Gloria	Marysville Chief Administrative Officer	ghirashima@marysvillewa.gov	
Holmes	Andrea "Andi"	DOC - Lynnwood Field Office	andrea.holmes@doc.wa.gov	425-322-8671
Lawless	Jim	Assistant Chief of Police - Marysville	jlawless@marysvillewa.gov	
Miller	Kelly	DOC Field Administrator	klmiller@doc1.wa.gov	425-513-5248
Nelson	Rebecca	Carnegie Resource Center Director - Pioneer Human Serv.	Nolan.Bennett@p-h-s.com	425-434-4680
Roberts	April	Edmonds Community College; DOC Reentry Navigator	april.roberts@edcc.edu	425-640-1192
Rosen	Mike	Planning Board, Citizen	rosen@hrpvideo.com	206-604-7553
Simle	Melody	DOC Family Council	msmile4774@gmail.com	425-280-7899
Thomas	Mark	Commander - Marysville PD	mthomas@marysvillewa.gov	360-363-8321

Mike Schindler, *Facilitator*

Work Release Program Overview

DOC Mission and Vision

DOC Mission: To Improve Public Safety by Positively Changing Lives

DOC Vision: Working Together for Safe Communities

- Work Release Purpose
 - Work release facilities serve as a bridge between life in prison and life in the community. Incarcerated individuals who complete the work release program are more likely to be successful in maintaining employment, stable housing, and in paying legal financial obligations. Recent research conducted by the Washington State Institute for Public Policy indicates that work release programs have a positive cost/benefit impact; for every dollar spent, \$3.82 is returned to the state.

Work Release Program Overview

Quick Facts

- Program created by the legislature in **1967**
- Up to last 6 months of total confinement time
- Function as reentry centers; community-based work, school, treatment required
- **12** existing facilities across the state
- Most work releases house both **males** and **females**
- Current statewide capacity +/-740 (waitlist +/-1300)

Work Release Program Overview

Program Description

- From **prison to community** while:
 - Under DOC authority
 - In partial confinement

- Focus on **reentry, transition, and stability** by:
 - Finding/retaining employment
 - Re-connecting with family members
 - Becoming productive citizens
 - Learning/refining life skills such as:
 - Using public transportation
 - Shopping
 - Managing personal finances

Work Release Program Overview

Placement Criteria

- **Eligibility is an earned privilege**
 - Good behavior and program compliance
- **Screening Criteria**
 - Defined in law and established in policy*
 - Trained staff identify participants based on identified risk and needs
 - Multiple levels of review required to approve some cases
- **Can be ineligible due to:**
 - Misconduct
 - Outstanding legal issues
 - Community concerns such as:
 - Victim concerns
 - Prior failure or rules violations at work release
 - Excess or serious pattern of criminal history
 - Heinous or notorious crime(s)

* Screening criteria are listed in policy DOC 300.500

Mark Kucza, *DOC Reentry Division Senior Administrator, Project Lead*

Participant Expectations

- **Participants must:**
 - Work, attend school or vocational training or transitional programming
 - Monitored to ensure approved movements prohibit making any unauthorized stops
 - Contribute financially (room and board and legal financial obligations)
 - Remain in the facility unless there is specific, prior written approval to be in the community
 - Undergo frequent UAs for drug/alcohol use
 - Continue programming, treatment or therapy to address identified risk/need areas associated with criminal activity
 - Cooperate with monitoring and behavioral expectations in the work release facility, workplace and other locations in the community

Work Release Program Overview

Progression Through Program

- **Three phase program**
- **“Step down” approach***
- **Gradual community access based upon:**
 - Following all rules
 - An individualized case plan
 - Compliant time in the facility
 - Meeting individual case plan objectives

...in order to increase public safety.

* DOC Policy 300.550 Monitoring Graduated Community Access

Mark Kucza, *DOC Reentry Division Senior Administrator, Project Lead*

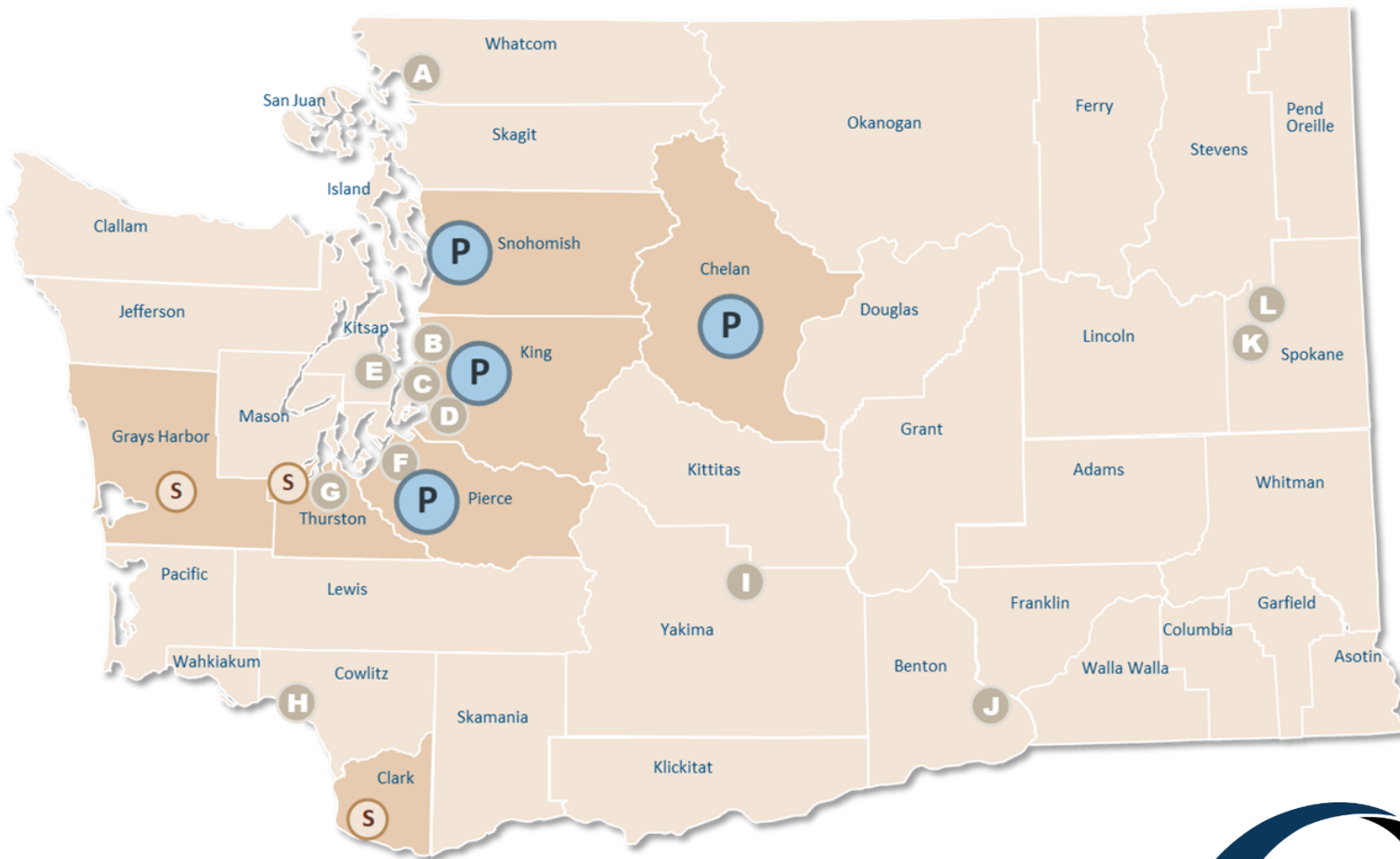


Work Release Program Overview

Work Release Expansion and Existing Facilities

Department of Corrections

Primary and Secondary Work Release Service Areas



Mark Kucza, DOC Reentry Division Senior Administrator, Project Lead



Current DOC Work Release facilities

- **12 separate facilities:**

- Ahtanum View (Yakima)
- Bellingham (Bellingham)
- Brownstone (Spokane)
- Bishop Lewis (Seattle)
- Eleanor Chase (Spokane)
- Longview (Longview)
- Olympia (Olympia)
- Peninsula (Port Orchard)
- Progress House (Tacoma)
- Helen B. Ratcliff (Seattle)
- Reynolds (Seattle)
- Tri-Cities (Kennewick)

Work Release Program Overview

Building Components

BUILDING COMPONENTS

- Controlled building access
- Normative street presence
- Clean, organized, safe sleeping space
- Supervised lobby and dayroom
- Room for administration and programs
- Robust service space (storage, laundry, etc.)
- Transportation, equipment, and supplies for work

Work Release Program Overview

Ahtanum View Work Release (Yakima)



Work Release Program Overview

Bellingham Work Release (Bellingham)



Work Release Program Overview

Bishop Lewis Work Release (Seattle)



Work Release Program Overview

Olympia Work Release (Olympia)



Expansion Project History

- Legislative Report, Implementation Plan
 - September 1, 2019
- Formed Local Advisory Committees in King, North Central, Pierce, and Snohomish Counties
 - Started: October 2019. Paused due to COVID-19, May 2020.
 - Restarted: February 2021
- Request for Proposals (RFPs) to lease space for Work Release facilities preferably in the four counties listed
 - Publication: December 27, 2019
 - Due Date: February 13, 2020
 - 6 submittals, No submissions from Snohomish County)
- Additional searches by DOC and LAC members to identify viable sites

Expansion Project Process/Timeline

Site Selection Steps

1. RCW 72.65.220 Facility siting process

- When DOC has selected three or fewer sites for final consideration, DOC shall make public notification and conduct a public hearing in the local communities of the final three or fewer sites.
 - Provide for opportunities for written or oral comments and wide dissemination of proposals and alternatives.

2. WAC 137-57-050 Site selection

- After the preliminary public hearing and an initial review, the advisory committee shall submit its recommendations to the Secretary, and the Secretary may give preliminary approval to one of the recommended sites.

Site Selection Steps (continued)

3. RCW 72.65.220 Facility siting process

- An additional public hearing after public notification shall also be conducted in the local community selected as the final proposed site.
- Provide for opportunities for written or oral comments and wide dissemination of proposals and alternatives.

4. WAC 137-57-060 Public notice, hearing requirements

- After the Secretary gives preliminary approval to a site, the Department shall either apply for or assist others in applying for any permits which may be required by local zoning laws with respect to the operation of a work/training release facility.
- After the required zoning permits, if any, have been obtained, and the Secretary has considered the comments expressed by members of the public during any zoning process or during the public hearing conducted by the Department, the Secretary may grant or withhold final approval of the proposed site.

Mountlake Terrace – 7125 224th Street SW

- City of Mountlake Terrace- Community and Economic Development Department
 - Next step is to prepare and submit a pre-application conference meeting application to walk through the project and proposed changes to the site/building.
 - Search committee is moving this property forward for LAC consideration pending results of pre-application conference and continued investor interest.

Tony Lindgren, *KMB Architects Consultant*

Brian Little, *KMB Architects Consultant*


Gar Rodside, *DOC Facilities Senior Planner*

Next Steps

Mountlake Terrace Pre-Application Process

Project Information

Project Name:	Department of Corrections Work Release Facility
Site Address:	7125 224th Street, SW Mountlake Terrace, WA 98026
Assessor Parcel:	27042900306300
Legal Owner:	Shuhao Hu
County:	Snohomish
Acresage:	0.87 acreage (37,740 SF)
Zoning:	Light Industrial/Office Park (LI/OP)

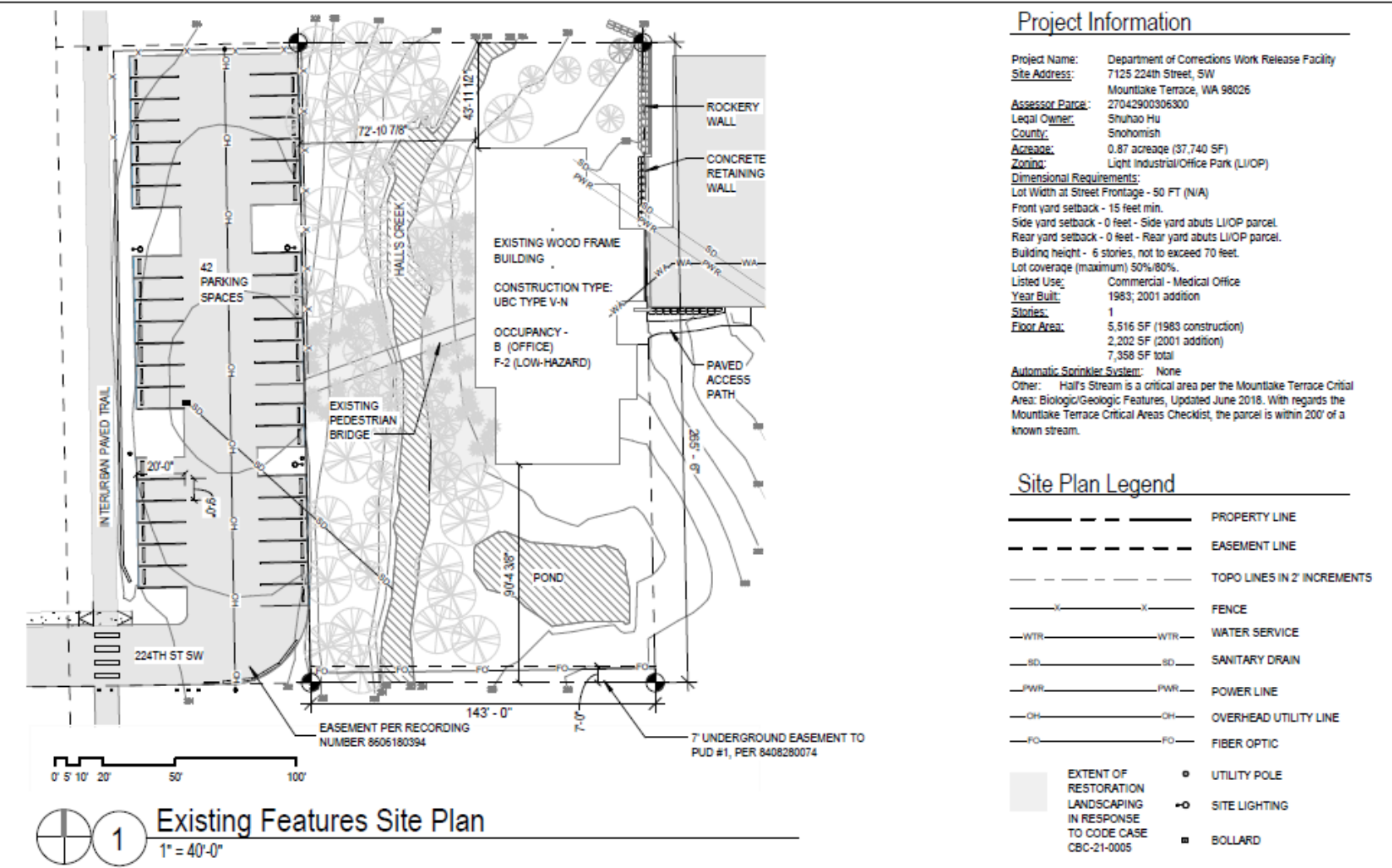
 Vicinity Plan
1" = 200'-0"

Tony Lindgren, *KMB Architects Consultant*

Mark Kucza, *DOC Reentry Division Senior Administrator, Project Lead*

Next Steps

Mountlake Terrace Pre-Application Process



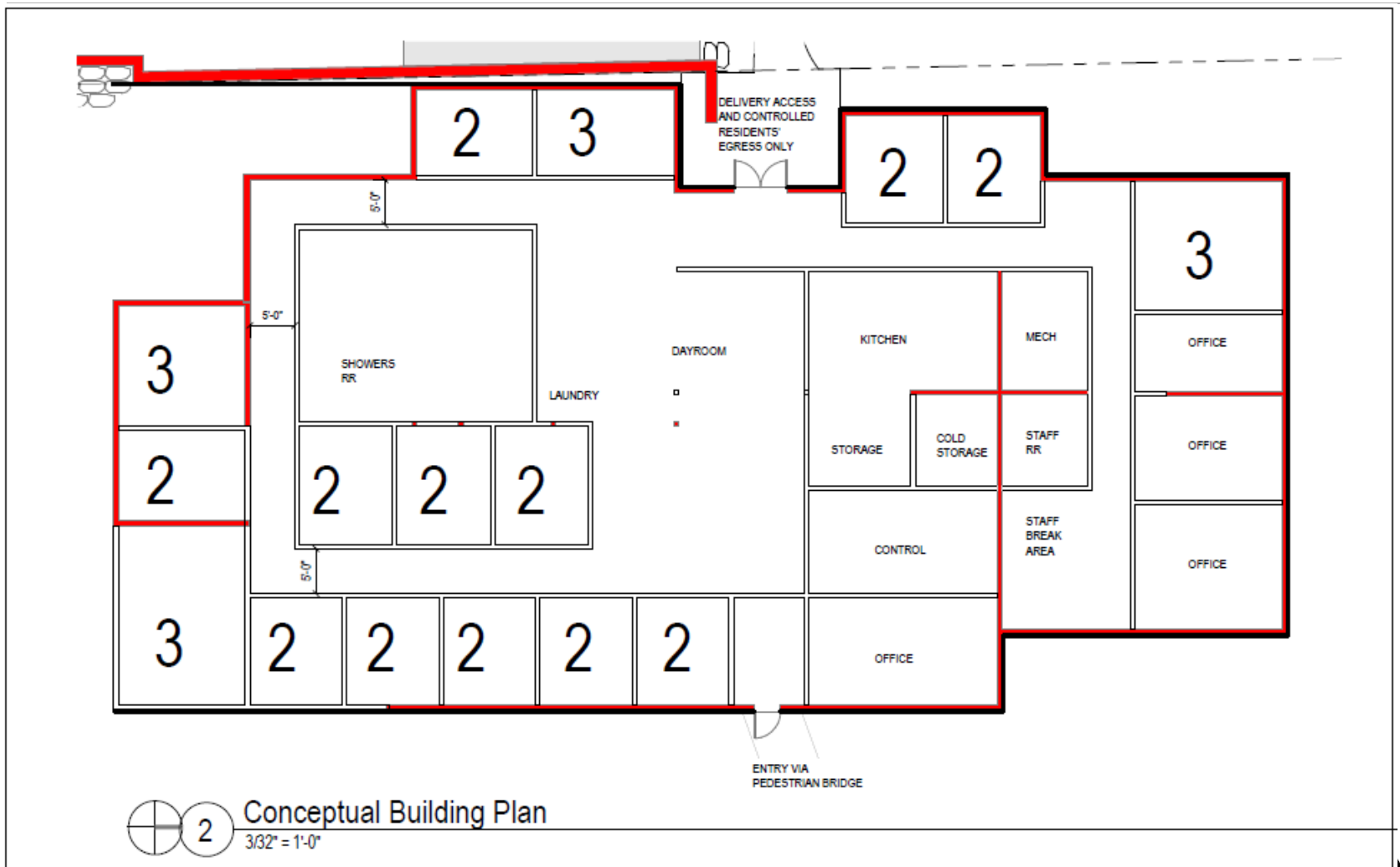
Tony Lindgren, KMB Architects Consultant

Mark Kucza, DOC Reentry Division Senior Administrator, Project Lead



Next Steps

Mountlake Terrace Pre-Application Process



Tony Lindgren, *KMB Architects Consultant*

Mark Kucza, *DOC Reentry Division Senior Administrator, Project Lead*

Questions

- Open discussion
- Action Items

Closing

- Local Advisory Committee materials
 - On DOC website: <https://doc.wa.gov/about/business/capital-planning/capacity-work-release.htm>
 - Materials available within 2 weeks
- Email questions
 - Snohomish County
 - docwrexpandsc@doc1.wa.gov
- Next Meeting
 - Tuesday, October 12, 2021
 - Typically occurs recurring 2nd Tuesday of each month

Thank you!