



Work Release Expansion Project

Snohomish County
March 2021



Agenda

Meeting Objectives:

- ✓ Introductions
- ✓ Review Siting Considerations
- ✓ Review County Zoning Data
- ✓ Review Site Specific Progress
- ✓ Review Communication Plan
- ✓ Next steps and closing

Time	Topic	Lead
4:00 – 4:10	Introductions and Project Objective	Mike Schindler, <i>Facilitator</i>
4:10 – 4:20	Siting Considerations	Mike Schindler
4:20– 4:30	County Zoning Data	Tony Lindgren, <i>KMB Consultant</i> Nanette Graham, <i>DOC Director of Capital Planning & Development</i>
4:30 – 4:35	Site Specific Progress	Tony Lindgren Nanette Graham
4:35 – 5:00	Communication Plan Review	Mark Kucza, <i>DOC Reentry Senior Administrator, Project Lead</i>
5:00 – 5:30	Questions, Next Steps & Closing	Mike Schindler

Mike Schindler, *Facilitator*



Introductions & Review Contacts

LAC Member Contact Information

Last Name	First Name	Company/Agency/Position	Email	Phone
Bloss	Jim	Community Advocate	jbloss132@gmail.com	360-794-3786
Frodema	Jon	Workforce Snohomish	jon.frodema@workforcesnohomish.org	425-921-3460
Gorle	Nicole	Snohomish County Council Legislative Analyst	nicole.gorle@snoco.org	425-388-3559
Goodman	Eric	Community Transit Snohomish County	eric.goodman@commtrans.org	425-870-4662 425-348-2307
Held	Michael	Snohomish County Prosecuting Attorney	mheld@co.snohomish.wa.us	425-890-6253
Hirashima	Gloria	Marysville Chief Administrative Officer	ghirashima@marysvillewa.gov	
Holmes	Andrea "Andi"	DOC - Lynnwood Field Office	andrea.holmes@doc.wa.gov	425-322-8671
Lawless	Jim	Assistant Chief of Police - Edmonds	james.lawless@edmondswa.gov	425-771-0207
Miller	Kelly	DOC Field Administrator	klmiller@doc1.wa.gov	425-513-5248
Rosen	Mike	Planning Board, Citizen	rosen@hrpvideo.com	206-604-7553
Simle	Melody	DOC Family Council	melsimle@aol.com	425-280-7899
Vaughn	Calei	Carnegie Resource Center Director - Pioneer Human Serv.	Calei.Vaughn@p-h-s.com	425-434-4680

Mike Schindler, *Facilitator*



Work Release Expansion Project

DOC Mission: To Improve Public Safety by Positively Changing Lives

DOC Vision: Working Together for safe Communities

- Work Release Expansion
 - Work release facilities serve as a bridge between life in prison and life in the community. Incarcerated individuals who complete the work release program are more likely to be successful in maintaining employment, stable housing, and in paying legal financial obligations. Recent research conducted by the Washington State Institute for Public Policy indicates that work release programs have a positive cost/benefit impact; for every dollar spent, \$3.82 is returned to the state.

- **Close to services**
 - Substance Abuse Treatment
 - Mental Health
 - WorkSource, Laborworks, etc.
- **Close to Transportation**
 - Bus lines need to connect to other buses
 - Frequency of bus/transit stops
 - Local & regional bus options
- **Walking distance to green space, proximity to parks, outdoor space**
 - Existence of sidewalks or other walkable areas
 - Proximity to schools, single family residential area
- **Shopping**
 - Clothing, Hygiene, Food, pharmacies

Developed with LAC (May 2020)

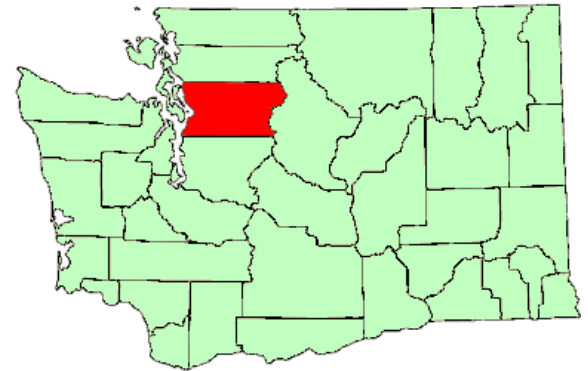
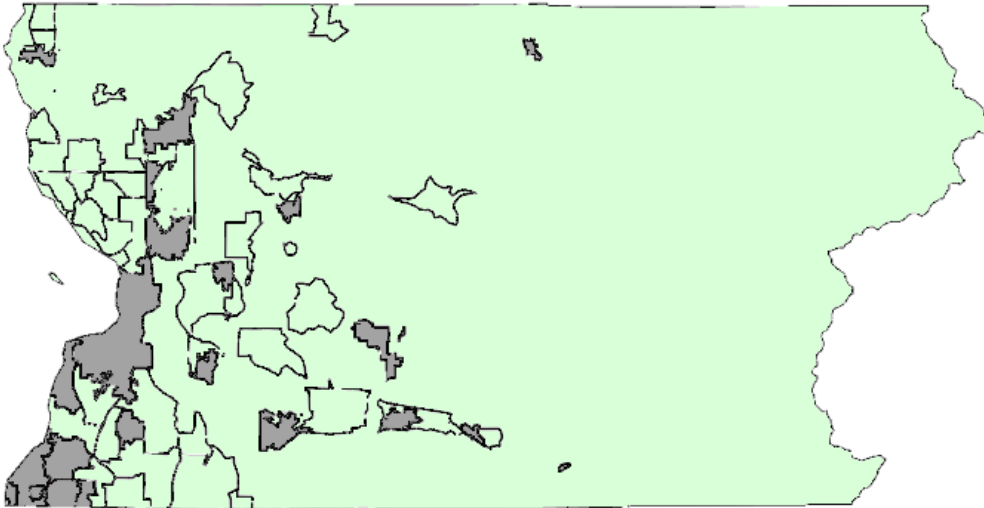
- **Building Security**
 - Security Lighting, methods to control movement
- **Building Requirements**
 - Meeting spaces/classroom areas for programming/presentations to residents, etc.
 - Parking (for staff and visitors)
 - Traffic
 - Backup systems for interruption such as power, water, gas, etc.
 - Resource room with computers, High speed internet (for communication, job searches, online application access, and other web-based services)
 - Storage for extra supplies (mattresses, linen, etc.), Secure resident property/evidence, Staff property
 - Exercise/fitness options
- **Other**
 - Address *'Not in my backyard'* (NIMBY) issues

County Zoning Data

Work in Progress

- **Snohomish County**

- Snohomish County has a total estimated population of 822,803 persons as of July 1, 2019, and a land area of 2,087.27 square miles. The County Seat is located in Everett. Snohomish County contains eighteen separate cities and towns.



County Zoning Data

Work in Progress

The table below lists the individual cities and towns, population, type of organization, and form of Government. Each city and town is responsible for developing and interpreting its own set of land use plans and controls.

City	Population (2020)	Class	Form of Government
Arlington	20,600	Code	Mayor-Council
Brier	6,760	Code	Mayor-Council
Darrington	1,420	Town	Mayor-Council
Edmonds	42,470	Code	Mayor-Council
Everett (County Seat)	112,700	First	Mayor-Council
Gold Bar	2,195	Code	Mayor-Council
Granite Falls	4,425	Code	Council-Manager
Index	175	Town	Mayor-Council
Lake Stevens	34,150	Code	Mayor-Council
Lynnwood	40,690	Code	Mayor-Council
Marysville	69,180	Code	Mayor-Council
Mill Creek	20,590	Code	Council-Manager
Monroe	19,800	Code	Mayor-Council
Mountlake Terrace	21,660	Code	Council-Manager
Mukilteo	21,360	Code	Mayor-Council
Snohomish	10,240	Code	Mayor-Council
Stanwood	7,125	Code	Mayor-Council
Sultan	5,530	Code	Mayor-Council
Woodway	1,360	Code	Mayor-Council

Tony Lindgren, *KMB Consultant*

Nanette Graham, *DOC Capital Planning & Development Director*



Mountlake Terrace – 7125 224th Street SW

- Engaged with the City of Mountlake Terrace- Planning Department to confirm findings and request next steps
 - Subject property it is zoned Light Industry/Office Park District (LI/OP). Mountlake Terrace Municipal Code (MTMC) Title 19 Zoning, Chapter 19.65 does not specifically list 'correctional facility' as a permitted or conditional use in the zone.
 - MTMC Title 18, Chapter 18.15.020 identifies 'correctional facilities' as a 'Type A essential public facility'. MTMC 18.15.030 allows correctional facilities in the LI/OP zone subject to a conditional use permit application and review.
 - Is this a fair analysis of the relevant Land Use and Zoning Codes? What is the official process and criteria for siting a DOC WR Facility in the LI/OP Zone?

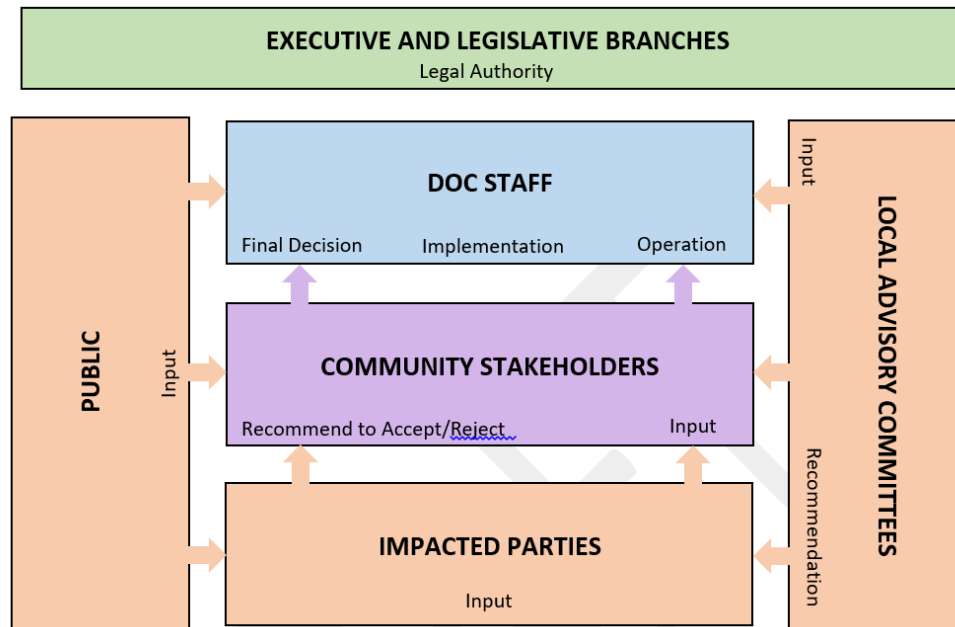
Communication Plan Review

LAC Communication Plan

Guiding Principles (Examples):

- We will be transparent
- We will be proactive in communicating with others
- We will foster an environment of “No surprises”

Decision Making Process



Mark Kucza, DOC Reentry Senior Administrator, Project Lead

Communication Plan Review

LAC Communication Plan

Approaches to outreach:

- Face-to-face (Virtual)
- Phone briefings
- Community meetings
- Door-to-door (informational flyers)
- Traditional Media
- Social Media
- Paid ads
- Social media
- Direct mail
- Emails
- Third party trusted advocates
- Website
- Factsheets
- Video/PowerPoint
- Visualizations

Communication Plan Review

LAC Communication Plan

- Thanks to Mike Rosen!
- Excellent starting point for plan development
- Local LAC Communication Liaison volunteer(s)?
- Populating the plan with more site specific information as it becomes available

Questions and Next Steps

- Open discussion
- Recommendations
- Action Items

Closing

- Local Advisory Committee materials
 - On DOC website: <https://doc.wa.gov/about/business/capital-planning/capacity-work-release.htm>
 - Materials available within 2 weeks
- Email questions
 - Snohomish County
 - docwrexpandsc@doc1.wa.gov
- Next Meeting
 - Tuesday, April 13, 2021 (recurring 2nd Tuesday of each month)

Thank you!